

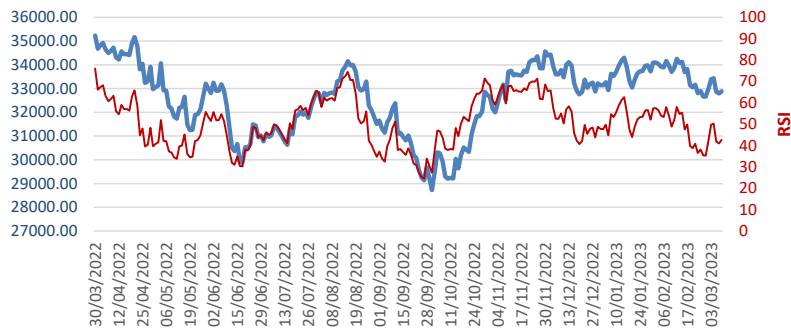


Μέλος του Χρηματιστηρίου Αξιών Αθηνών
 Μέλος του Χρηματιστηρίου Παραγώγων Αθηνών
 Μέλος του Δικτύου ΧΝΕΤ

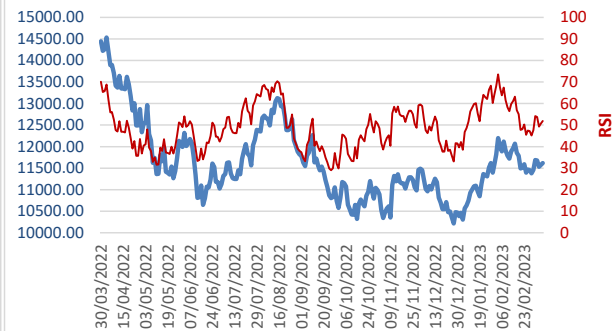
Member of the Athens Stock Exchange
 Member of the Athens Derivatives Exchange
 Member of the XNET Network

Σοφοκλέους 7-9, Αθήνα 10559/7-9 Sophokleous St. 10559 Athens
 Τηλ./Tel. 210 3213913, 3214967
 Fax 210 3216115
 email: nchryso@otenet.gr
 www.chrysochoidis.gr

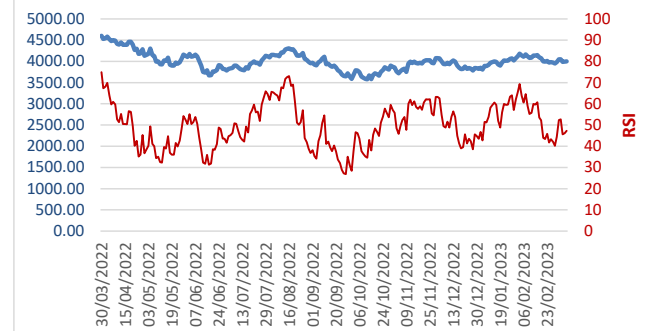
DOW



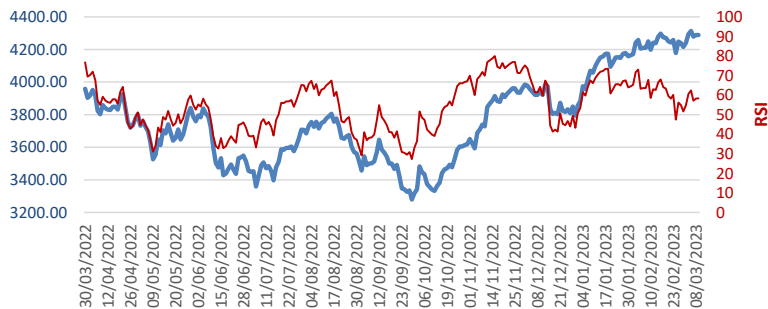
NASDAQ COMP.



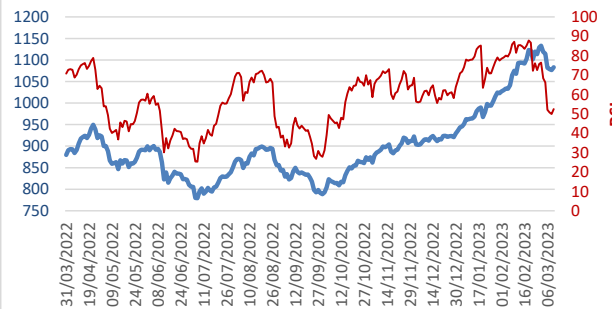
S&P 500



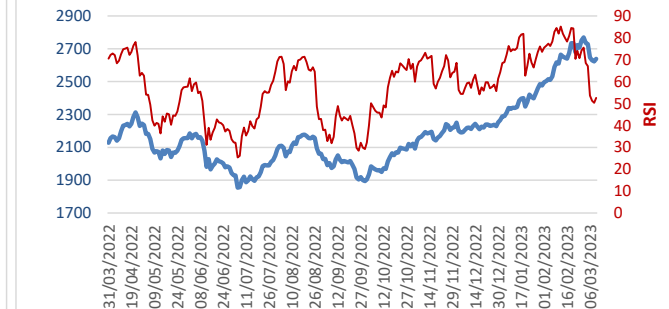
EURO STOXX 50



ATHENS GENERAL INDEX



FTSE 25 ATH



09/03/2023	Τιμή Price	RSI14	65ma RSI	%B	ADX	DI14+	DI14-	Βραχυπρόθεσμη Κίνηση Short-term Trend	Δυναμική Όγκου Volume Strength	KMO65 KMO65	Hi65days	Low65days	Μεσοπρόθεσμη Τάση Mid-term Trend	% Change 1Y. BACK	09/03/2023
GD	1083.22	52	71	0.25	33	23	23	Strong Down Trend	Positive	1005.06	1140.96	901.50	UPWARD	25.83%	.ATG
FTSE	2639.40	53	69	0.27	41	25	20	Strong Up Trend	Positive	2440.74	2795.71	2183.35	UPWARD	27.13%	.ATF
ΑΛΦΑ	1.28	43	64	0.10	42	20	22	Strong Down Trend	Negative	1.19	1.51	0.97	UPWARD	21.74%	ACBr.AT
ΒΙΟ	4.49	48	56	0.24	18	15	22	Neutral Down Trend	Positive	4.36	4.86	3.96	UPWARD	15.27%	VI0H.BR
ΔΕΗ	8.17	58	62	0.65	32	29	23	Strong Up Trend	Positive	7.29	8.48	6.44	UPWARD	#ΑΝΑΦ!	DEHr.AT
ΕΕΕ	24.60	69	51	0.80	15	27	20	Neutral Up Trend	Negative	22.75	24.70	21.54	UPWARD	24.80%	CCH.L
ΕΛΛΑΚΤΩΡ	2.01	41	58	-0.10	20	13	24	Neutral Down Trend	Positive	1.97	2.46	1.66	UPWARD	40.00%	HELr.AT
ΕΛΠΕ	7.85	44	60	0.15	18	15	21	Neutral Down Trend	Negative	7.71	8.68	6.93	UPWARD	17.20%	HEPr.AT
ΕΤΕ	4.85	50	64	0.32	38	25	21	Strong Up Trend	Negative	4.30	5.53	3.61	UPWARD	44.75%	NBGr.AT
ΑΔΜΗΕ	1.86	42	56	0.18	18	13	20	Neutral Down Trend	Negative	1.84	2.04	1.68	UPWARD	-20.84%	ADMr.AT
ΕΥΡΩΒ	1.37	52	64	0.35	39	24	16	Strong Up Trend	Positive	1.21	1.49	1.00	UPWARD	39.40%	EURBr.AT
ΕΧΑΕ	4.14	54	63	0.38	27	22	25	Strong Down Trend	Positive	3.65	4.53	3.07	UPWARD	16.06%	EXCr.AT
ΙΝΛΟΤ	0.69	57	54	0.60	20	48	35	Neutral Up Trend		0.61	0.77	0.37	UPWARD	22.46%	INLr.AT
ΜΟΥΖΚ	0.74	51	49	0.41	7	33	35	Neutral Down Trend		0.73	0.81	0.68	UPWARD	26.08%	ΜΟΥΖKr.AT
ΜΟΤΟ	2.76	55	53	0.53	40	37	29	Strong Up Trend	Negative	2.33	3.10	1.98	UPWARD	27.54%	MOTr.AT
ΜΟΗ	24.54	55	66	0.41	20	28	17	Neutral Up Trend	Positive	22.79	25.82	19.94	UPWARD	#ΑΝΑΦ!	MORr.AT
ΜΠΕΛΑ	21.60	80	63	1.19	40	38	7	Strong Up Trend	Positive	17.11	22.06	14.80	UPWARD	#ΑΝΑΦ!	BABr.AT
ΜΥΤΙΑ	24.80	58	73	0.52	28	22	24	Strong Down Trend	Positive	22.20	25.64	18.25	UPWARD	44.56%	MYTr.AT
ΟΛΠ	18.50	65	60	0.68	32	22	16	Strong Up Trend	Negative	17.07	19.00	15.66	UPWARD	18.59%	OLPr.AT
ΟΠΑΠ	14.51	49	59	0.09	26	23	16	Neutral Up Trend	Negative	13.85	15.30	12.94	UPWARD	23.70%	OPAr.AT
ΟΤΕ	13.68	29	46	0.03	17	13	36	Neutral Down Trend	Negative	14.73	15.73	13.53	DOWNWARD	-18.42%	OTEr.AT
ΠΕΙΡ	2.08	48	68	0.16	43	20	24	Strong Down Trend	Negative	1.79	2.45	1.25	UPWARD	100.00%	BOPr.AT
ΤΕΝΕΡΓ	18.72	40	51	0.31	14	16	23	Neutral Down Trend	Positive	19.87	21.04	18.24	DOWNWARD	28.21%	TENr.AT
ΤΙΤΚ	14.36	40	65	0.08	34	15	27	Strong Down Trend	Negative	13.79	16.00	11.96	UPWARD	21.01%	TTNr.AT
ΦΡΙΓΟ	0.06	25	55	-0.02	37	15	57	Strong Down Trend		0.10	0.16	0.06	DOWNWARD	-56.59%	FRIr.AT
ΚΡΙ	6.58	66	55	1.21	6	29	17	Neutral Up Trend	Positive	6.29	6.70	5.78	UPWARD	-10.94%	KRIr.AT
FTSEM	1570.09	45	70	0.11	32	20	26	Strong Down Trend	Negative	1508.88	1660.73	1358.07	UPWARD	8.97%	.ATF40
ΑΤΤ	18.62	100	54	1.23	#ΔΙΑΙΡ/0!	99	0	#ΔΙΑΙΡ/0! Up Trend		0.59	18.62	0.01	UPWARD	99.88%	BOAr.AT
ΓΕΚΤΕΡΝΑ	11.50	46	65	0.27	22	12	25	Neutral Down Trend	Positive	11.30	12.62	9.64	UPWARD	29.42%	HRMr.AT

ΕΠΕΞΗΓΗΣΗ ΣΗΜΑΤΩΝ

RSI		ADX, DI+-	
ΠΡΟΣΟΧΗ :	ΠΟΛΥ ΧΑΜΗΛΗ ΤΙΜΗ	ΠΡΟΣΟΧΗ:	ΧΑΜΗΛΗ ΤΙΜΗ, ΙΣΩΣ ΓΥΡΙΣΜΑ
ΚΙΤΡΙΝΟ:	ΧΩΡΙΣ ΘΕΤΙΚΟ MOMENTUM	ΚΙΤΡΙΝΟ:	ΧΩΡΙΣ ΤΑΣΗ (+ ή -)
ΠΡΑΣΙΝΟ:	ΘΕΤΙΚΟ MOMENTUM	ΠΡΑΣΙΝΟ:	ΘΕΤΙΚΟ MOMENTUM
ΑΝΟΔΟΣ:	ΕΝΤΟΝΑ ΘΕΤΙΚΟ	ΑΝΟΔΟΣ:	ΕΝΤΟΝΑ ΘΕΤΙΚΗ ΤΑΣΗ
ΚΟΚΚΙΝΟ:		ΚΟΚΚΙΝΟ:	ΑΡΝΗΤΙΚΟ MOMENTUM
ΚΑΘΟΔΟΣ:		ΚΑΘΟΔΟΣ:	ΕΝΤΟΝΑ ΑΡΝΗΤΙΚΗ ΤΑΣΗ
ΣΗΜΑΙΑ:	ΠΡΟΣΟΧΗ ΣΕ ΓΥΡΙΣΜΑ	ΣΗΜΑΙΑ:	ΠΡΟΣΟΧΗ ΣΕ ΓΥΡΙΣΜΑ

09/03/2023	Τιμή Price	RSI14	65ma RSI	%B	ADX	DI14+	DI14-	Βραχυπρόθεσμη Κίνηση Short-term Trend	Δυναμική Όγκου Volume Strength	KMO65 KMO65	Hi65days	Low65days	Μεσοπρόθεσμη Τάση Mid-term Trend	% Change 1Y. BACK	09/03/2023
ΕΥΔΑΠ	6.80	37	50	0.07	26	6	20	Neutral Down Trend	Negative	6.91	7.34	6.50	DOWNWARD	1.32%	EYDr.AT
ΕΥΑΠΣ	3.47	43	50	0.06	19	7	23	Neutral Down Trend	Positive	3.49	3.66	3.30	DOWNWARD	-21.04%	TWSr.AT
ΑΡΑΙΓ	7.16	53	69	0.13	44	24	16	Strong Up Trend	Positive	6.25	7.64	4.97	UPWARD	29.89%	AGNR.AT
ΙΚΤΙΝ	0.59	41	60	0.11	36	10	20	Strong Down Trend	Negative	0.56	0.68	0.48	UPWARD	-1.02%	IKTr.AT
ΙΝΤΚΑ	1.80	39	58	0.15	15	17	23	Neutral Down Trend	Negative	1.85	2.12	1.61	DOWNWARD	12.95%	INRr.AT
ΙΝΚΑΤ	1.64	43	61	-0.02	23	14	18	Neutral Down Trend	Positive	1.52	1.79	1.19	UPWARD	-8.62%	INCr.AT
ΛΑΜΔΑ	6.15	43	57	0.36	38	38	48	Strong Down Trend	Positive	6.88	21.10	5.50	DOWNWARD	4.96%	LMDr.AT
ΕΛΧΑ	1.77	51	59	0.39	19	14	22	Neutral Down Trend	Negative	1.72	1.89	1.58	UPWARD	4.52%	ELHA.AT
ΠΡΟΦ	2.79	28	50	0.09	25	11	28	Neutral Down Trend	Negative	2.93	3.18	2.73	DOWNWARD	-4.66%	PRFr.AT
ΚΟΥΕΣ	5.06	45	58	0.13	8	11	19	Neutral Down Trend	Negative	5.02	5.46	4.46	UPWARD	-11.53%	IQTRr.AT
ΟΤΟΕΛ	11.92	63	60	0.57	39	29	18	Strong Up Trend	Negative	10.77	12.56	9.90	UPWARD	25.92%	AUTr.AT
ΠΛΑΘ	4.12	36	55	0.14	23	12	28	Neutral Down Trend	Negative	4.25	4.68	3.86	DOWNWARD	-21.36%	THRr.AT
ΠΛΑΙΣ	4.58	91	83	0.75	87	72	0	Sharp Up Trend		4.27	4.63	2.90	UPWARD	23.58%	PLAr.AT
ΣΑΡ	6.99	41	56	0.20	19	12	26	Neutral Down Trend	Negative	7.11	8.00	6.35	DOWNWARD	-1.86%	SRSr.AT
CENER	3.86	51	62	0.27	36	20	17	Strong Up Trend	Negative	3.50	4.18	2.98	UPWARD	13.62%	CENEr.AT
ΦΡΛΚ	3.59	39	62	0.08	25	13	27	Neutral Down Trend	Negative	3.54	3.99	2.96	UPWARD	-2.37%	FRLr.AT
ΠΑΠ	2.40	44	53	0.06	21	8	24	Neutral Down Trend	Positive	2.38	2.51	2.19	UPWARD	1.67%	HYGr.AT

INDEX:

RSI14 The relative power index, or RSI of 14 days, determines overbought or oversold market conditions. It is measured on a scale of 0 to 100. Indications below 20 show over-selling, while the indications above 80 indicate over-buying.

65maRSI The 65-day moving average of the 14-day RSI is measured on the same scale as RSI. It works in conjunction with RSI. RSI results over 65 days Moving Average show support for upward RSI movement, values below 65 days M.O. show the opposite.

%B Formula% B shows us where the value is relative to the Bollinger strips. Continuous values close to 1 mean dynamic upward disposition, consecutive values close to zero indicate dynamic downward disposition. Ascending or Incremental escalation of% B either from extreme values or from the middle value of 0.50 precedes us for analogous motion. 1 defines the upper Bollinger, 0.50 middle and zero down. The middle Bollinger is the 20-day M.O.

ADX The ADX Middle Direction Indicator measures the power of the trend, without affecting its direction. When it is over 26 means there is a trend.

DI+ DI- The positive direction indicator DI + measures the positive force of the trend. The negative direction indicator DI- measures the negative force of the trend. Whichever is higher than the other leads the trend to its side. The ideal entry point is exactly when one of the two gets higher than the other, with ADX values higher than 26, of course.

AD% This oscillator: Accumulator - Distribution, AD%, is a 10 day volume oscillator in relation to the closing opening prices as well as the extreme values that the share receives each day. When it is positive, it means an upwardly available price, supported by the volume. The reverse is true for its negative values. It is used to confirm or not, the strength of each short-term motion.

SMA65 The 65-day Moving Average, SMA65, is a trend indicator. Specifically, the average is 3 months in business days. When the value is higher than SMA65 shows Upward Medium Voltage. When the value is below SMA65 it shows Descending Medium-Term Trend. It can also act as a conservative entry point when the stock gets more than SMA65.

Short-term movement Movement up to calculation date.

Mid-term movement Movement up to calculation date.

Sharp: Πάρα πολύ Δυνατή - **Strong:** Δυνατή - **Neutral:** Ουδέτερη - **Up Trend:** Ανοδική Τάση - **Down Trend:** Καθοδική Τάση - **Upward:** Ανοδική - **Downward:** Καθοδική

Ρήτρα Περιορισμού Ευθύνης:

Απαγορεύεται η αναδημοσίευση του παρόντος χωρίς την άδεια της Ν. ΧΡΥΣΟΧΟΪΔΗΣ ΧΡΗΜΑΤΙΣΤΗΡΙΑΚΗΣ Α.Ε.Π.Ε.Υ. Οι απόψεις που περιέχονται βασίζονται σε πηγές που θεωρούνται αξιόπιστες, ωστόσο η Ν. ΧΡΥΣΟΧΟΪΔΗΣ ΧΡΗΜΑΤΙΣΤΗΡΙΑΚΗ Α.Ε.Π.Ε.Υ. δεν ευθύνεται για την εγκυρότητα, ορθότητα ή αξιοπιστία τους και διατηρεί το δικαίωμα αλλαγής τους χωρίς πρότερη ειδοποίηση. Τόσο η Ν. ΧΡΥΣΟΧΟΪΔΗΣ ΧΡΗΜΑΤΙΣΤΗΡΙΑΚΗ Α.Ε.Π.Ε.Υ. όσο και οι διευθύνοντες και υπάλληλοι της δεν φέρουν ουδεμία ευθύνη για οποιαδήποτε συνέπεια των πληροφοριών αυτών. **Το παρόν δεν αποτελεί προσφορά, προτροπή ή επενδυτική πρόταση για αγορά ή πώληση μετοχών ή άλλων κινητών αξιών. Οι επενδύσεις που αναφέρονται ενδέχεται να μην είναι οι ενδεδειγμένες για ορισμένους επενδυτές.**

Disclaimer:

This report has been issued by N. CHRYSOCHOIDIS STOCK BROKERAGE I.S.S.A., a member of the Athens Stock Exchange, and may not be reproduced in any manner or provided to any other persons. Each person that receives a copy by acceptance thereof represents and agrees that it will not distribute or provide it to any other person. The information contained herein has been obtained from sources believed to be reliable but has not been verified by N. CHRYSOCHOIDIS STOCK BROKERAGE I.S.S.A. The opinions expressed herein may not necessarily coincide with those of any member of N. CHRYSOCHOIDIS STOCK BROKERAGE I.S.S.A. No representation or warranty (express or implied) is made as to the accuracy, completeness, correctness, timeliness or fairness of the information or opinions herein, all of which are subject to change without notice. No responsibility of liability whatsoever or howsoever arising is accepted in relation to the contents hereof by N. CHRYSOCHOIDIS STOCK BROKERAGE I.S.S.A. or any of its directors, officers or employees. **This report is not an offer to buy or sell or a solicitation of an offer to buy or sell securities mentioned herein.** N. CHRYSOCHOIDIS STOCK BROKERAGE I.S.S.A. may effect transactions in or perform or seek to perform brokerage services for companies covered. The investments discussed in this report may be unsuitable for investors, depending on their specific investment objectives and financial position.